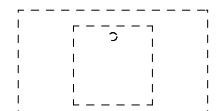
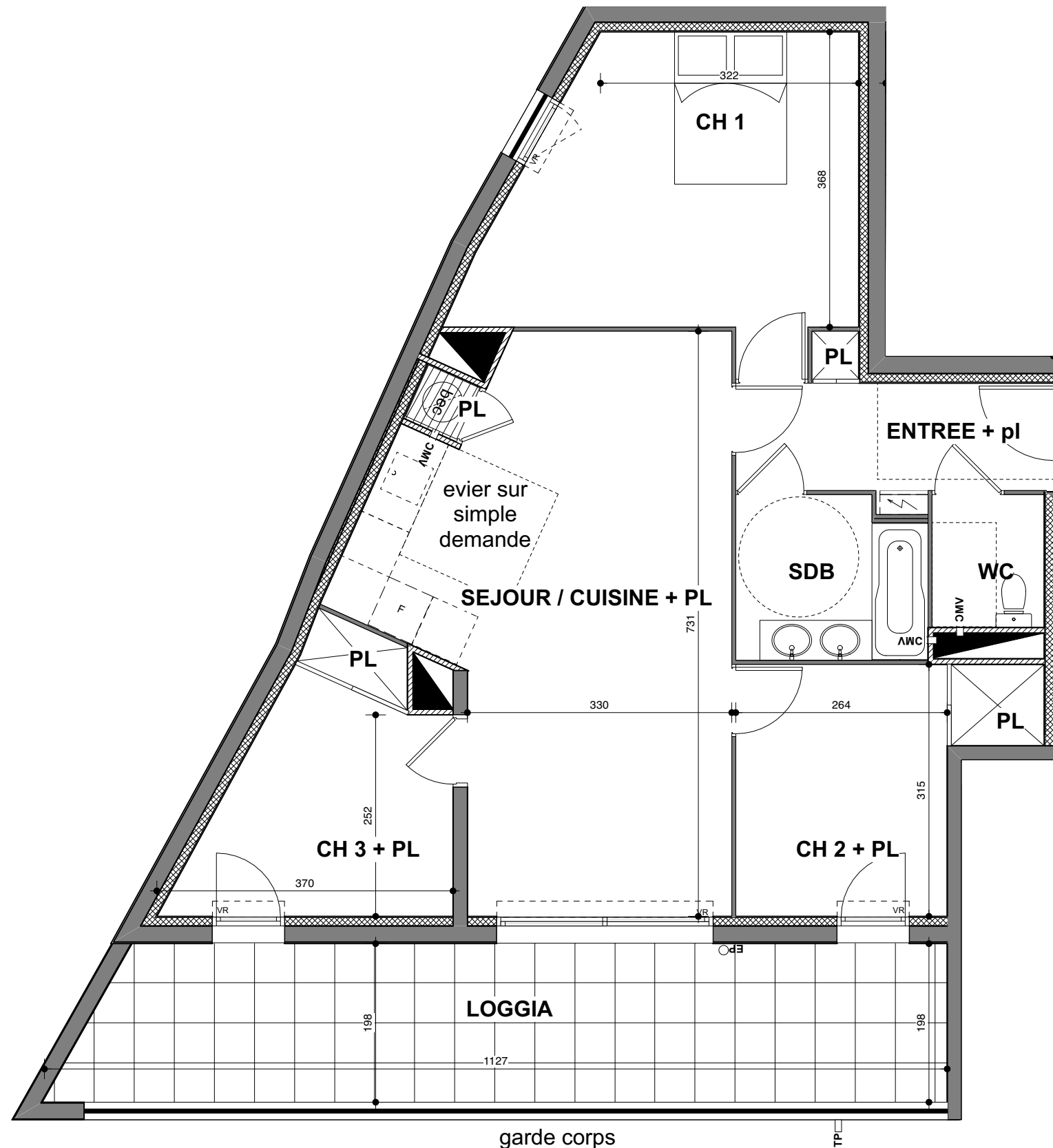
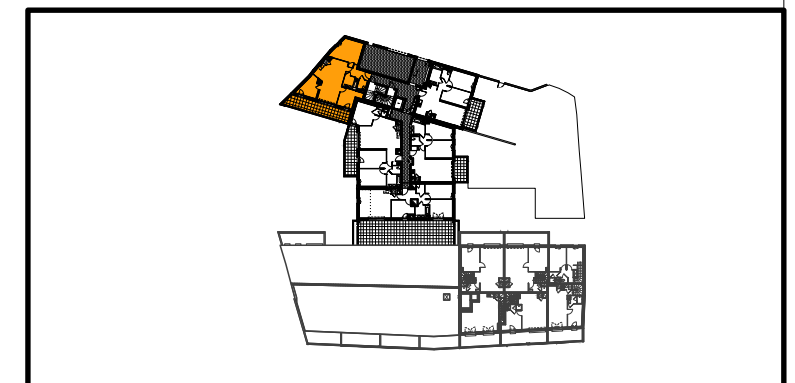
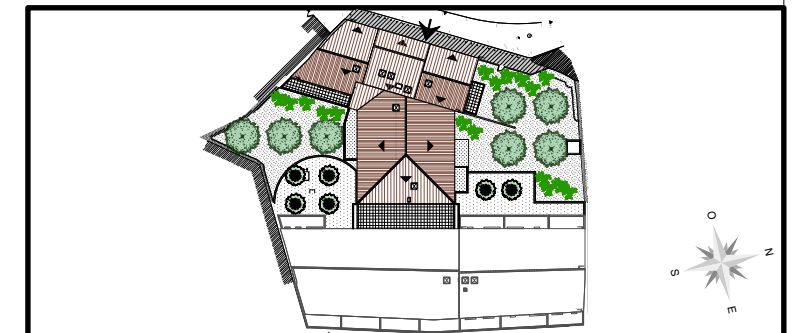




S.A.S.URBAT PROMOTION -
Immeuble oxygène
1401 Av du Mondial 98
34 965 MONTPELLIER

TYPE: T4 NIV: R. D. C haut APPT: B 11



Simple évier sur demande

Ballon d'eau chaude

Tableau électrique

PI : Placard

Vr : Volet Roulant

Tablette

Faux plafonds soffites

Ep : Eaux pluviales

SURFACES HABITABLES

entrée + pl	5,70
séjour / cuisine + pl	27,98
chambre 1	16,25
chambre 2 + pl	9,53
chambre 3 + pl	9,13
salle de bain	4,73
wc	2,33

TOTAL 75,65

loggia 21,21

PLANS NOTAIRES

Montpellier, le 21/06/2023

IMPLANTATION DE L'APPAREILLAGE ELECTRIQUE

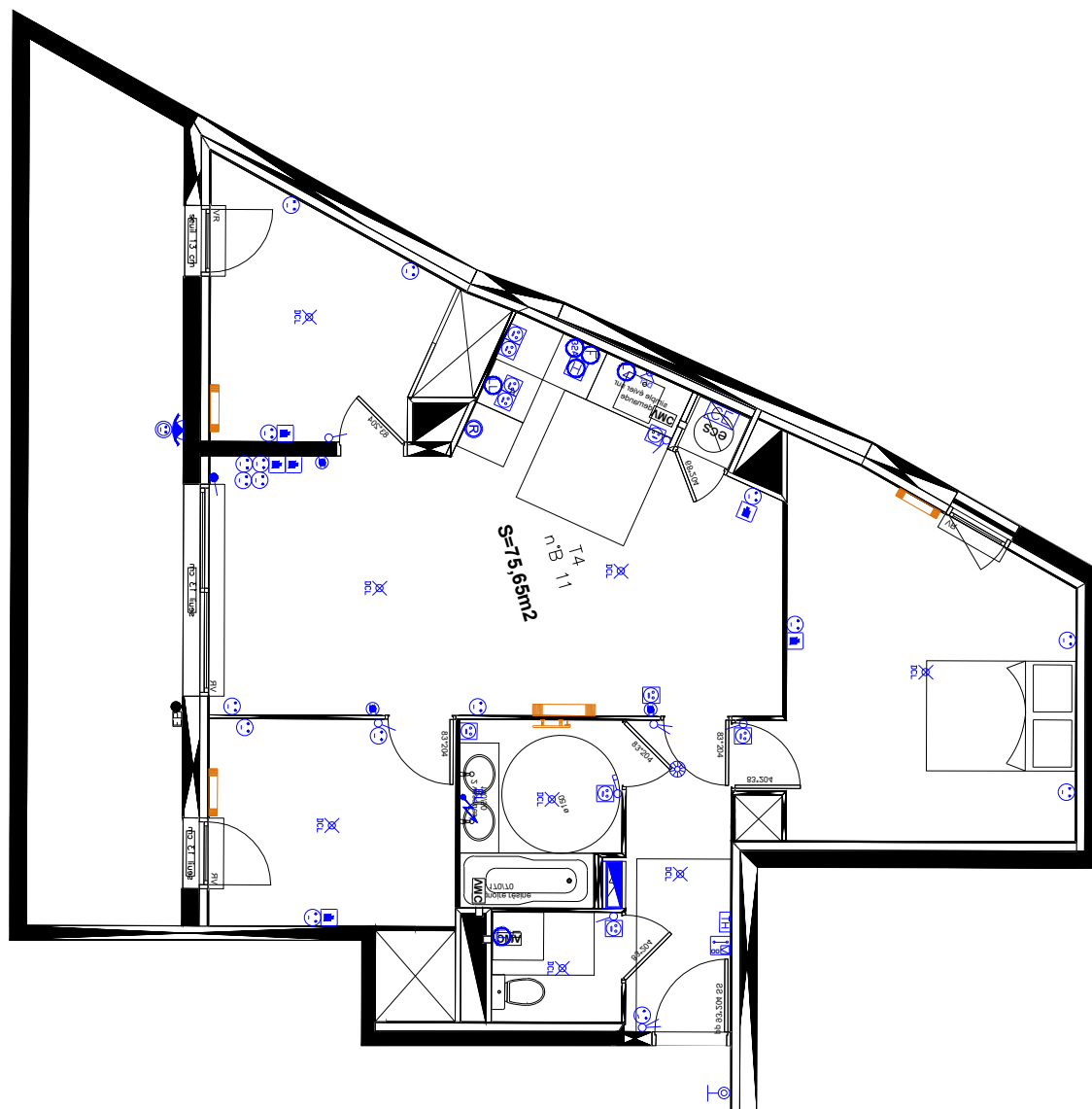
DATE : 16/05/2023

"PUECH DUPLAN"



























T4

B11

R+2



LEGENDE

-  GTL 60x25 cm
-  Thermostat bi-zone
-  Alimentation chauffe eau thermodynamique
-  Détecteur de fumée (DAAF)
-  Vidéophone intérieur
-  Sèche serviette SDB
-  Radiateur
-  Alimentation en attente éclairage cuisine
-  Applique décorative extérieure
-  DCL en plafond ou applique
-  Luminaire SDB
-  Interrupteur va & vient
-  Interrupteur simple allumage
-  Interrupteur double allumage
-  Interrupteur double allumage lumineux
-  Interrupteur simple allumage lumineux
-  Bouton poussoir sur télérupteur / sonnette
-  Prise RJ45 grade II TV
-  PC 16A+T
-  PC 16A+T h=1.1ml
-  PC 16A+T étanche
-  PC16A+T h=1.8ml Hotte
-  PC16A+T spécialisée Four
-  PC16A+T spécialisée Four mixte
-  PC16A+T Frigo
-  PC16A+T spécialisé Lave linge
-  PC16A+T spécialisé Lave Vaisselle
-  PC16A+T extérieur étanche
-  PC32A+T spécialisé Plaque de cuisson

CE PLAN EST SUSCEPTIBLE D'ÊTRE LÉGEREMENT MODIFIÉ EN FONCTION DES BESOINS TECHNIQUES DE LA RÉALISATION EN CE QUI CONCERNE LES DIMENSIONS LIBRES, LES ÉQUIPEMENTS ET LE POSITIONNEMENT DES APPAREILLAGES ÉLECTRIQUES. LES RETOMBÉES, SOFFITES, ENCOFFREMENTS, FAUX PLAFONDS, CANALISATIONS NE SONT PAS FIGURÉS ET NE POURRONT FONDRE AUCUNE RÉCLAMATION EN CAS DE PRÉSENCE.