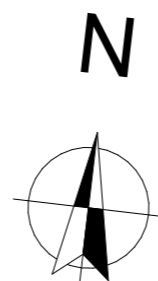





TE : Tableau Electrique
 PL : Placard
 VR : Volet Roulant
 EP : Eaux pluviales
 CL.3 : Grillage simple torsion



LEGENDE

-  Faux -plafond Soffite
-  Evier sur demande pour les T3 et T4
-  Chaudière à Gaz



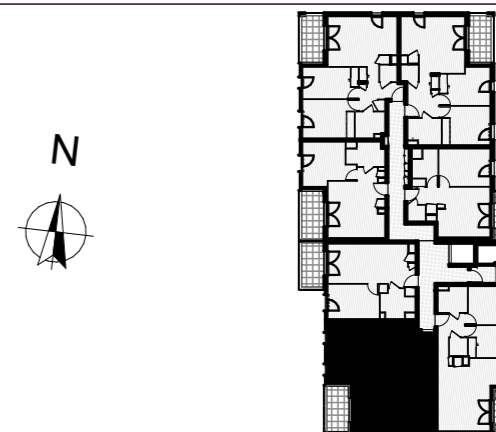
1401 Avenue du Mondial 98 - 34965 Montpellier

BATIMENT:	F	LOT:	
NIVEAU:	R+2		F22
TYPE:	T3		

PLAN NOTAIRE

05/10/2022

PLAN DE REPERAGE



SURFACES HABITABLES

Entrée + Pl	7,66 m ²
Séjour / Cuisine	24,25 m ²
Chambre 1 + Pl	12,03 m ²
Chambre 2	10,90 m ²
Salle de bains	5,22 m ²
WC	1,90 m ²
TOTAL	61,96 m²
Balcon	7,18 m ²