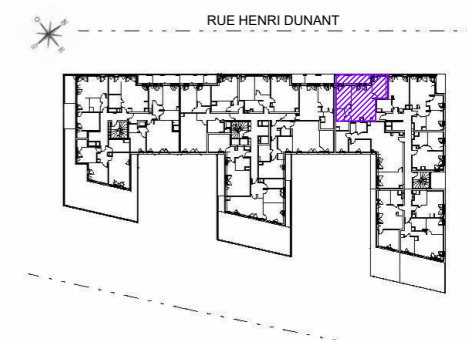


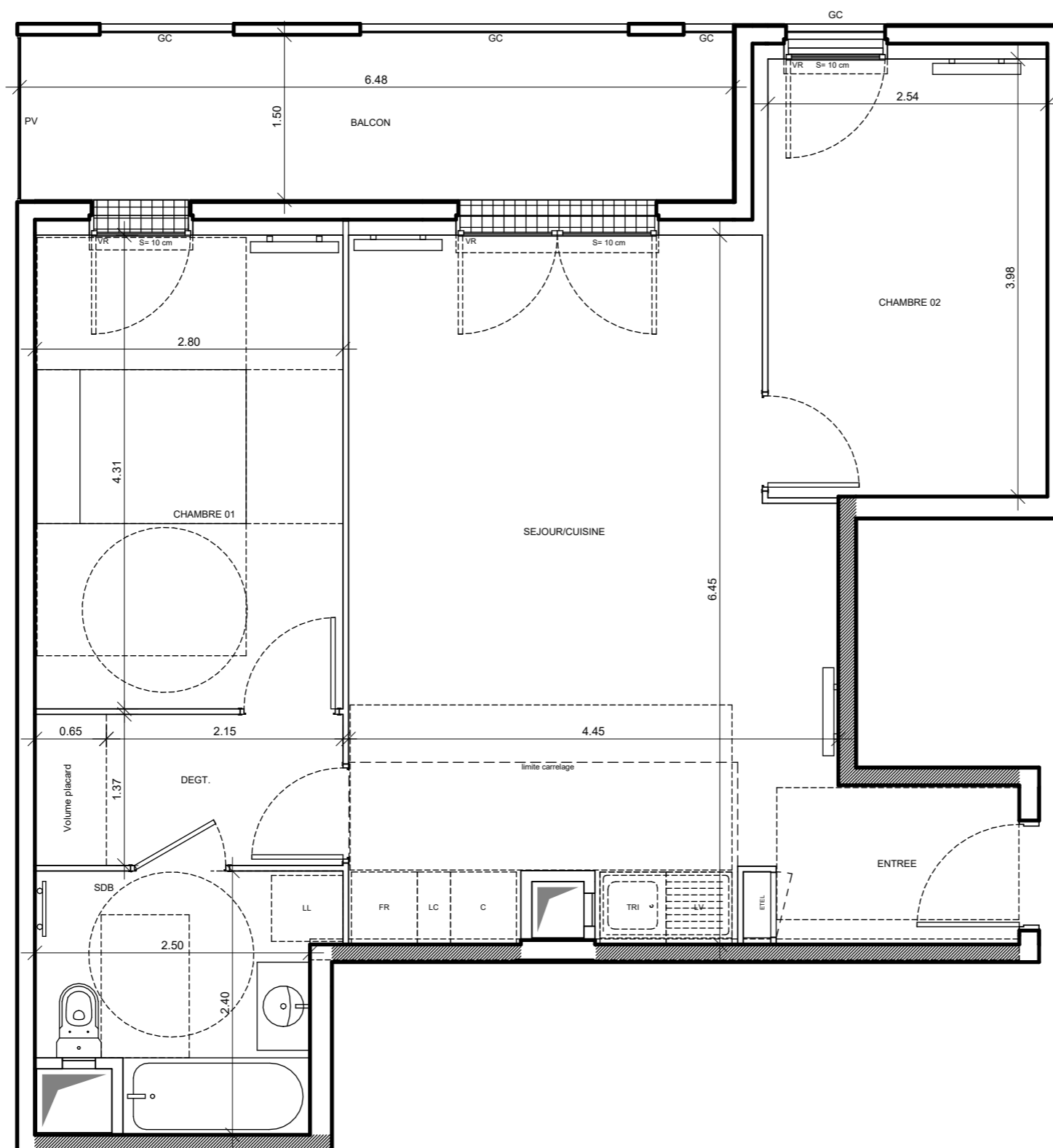
ALLURE

RUE HENRI DUNANT
95300 PONTOISE



BATIMENT 1 HALL 1



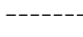

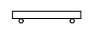
Appartement de 3 pièces
n° 1405 au 4^{ème} étage



◀ N°1405

| | |
|---------------------------------|----------------------------|
| ENTREE | 3.21 m ² |
| SEJOUR/CUISINE | 25.48 m ² |
| CHAMBRE 01 | 12.05 m ² |
| CHAMBRE 02 | 10.11 m ² |
| DEGAGEMENT | 3.85 m ² |
| SALLE DE BAIN | 5.63 m ² |
| SURFACE HABITABLE TOTALE | 60.33 m² |
| BALCON | 9.73 m ² |
| SURFACE TOTALE | 70.06 m² |

Plan de vente d'un appartement déclaré accessible au titre de la loi ELAN

| LEGENDE | | | |
|---|--------------------|---|--|
| LL | LAVE-LINGE | C | BLOC CUISSON |
| LV | LAVE-VAISSELLE | FR | REFRIGERATEUR |
| TRI | TRI SELECTIF | LC | LINEAIRE COMPLEMENT. (EXIGENCE NF HABITAT) |
| MP | MEUBLE PACK | LIMITE SUP. DES TRAPPES DE VISITE DES CUISINES < 75CM DU SOL FINI | |
| AV | ALLEGE VITREE | VR | VOLET ROULANT |
| GC | GARDE CORPS | ETEL | ESPACE TECH. ELEC DU LOGEMENT |
| PV | PARE VUE | | |
| S | SEUIL | | |
| OB | OSCILLO-BATTANT | | |
|  | SOFFITE |  | SAD |
|  | RETOMBEE DE POUTRE |  | RADIATEUR |
| | |  | SECHE-SERV |